



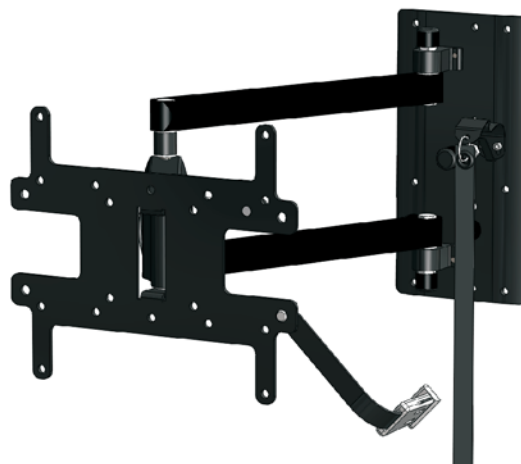
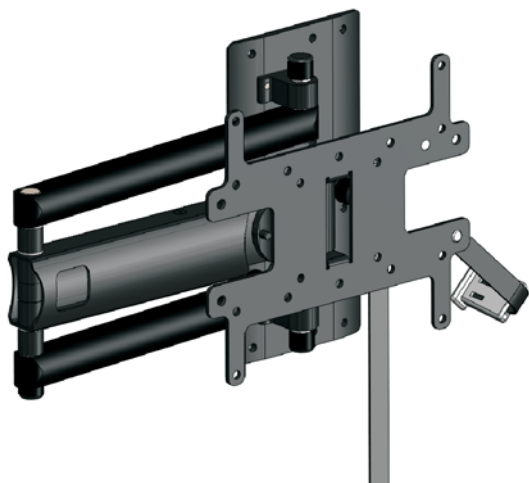
UPHOLDING A VISION.

tvmount

Product Number MS24L-FA

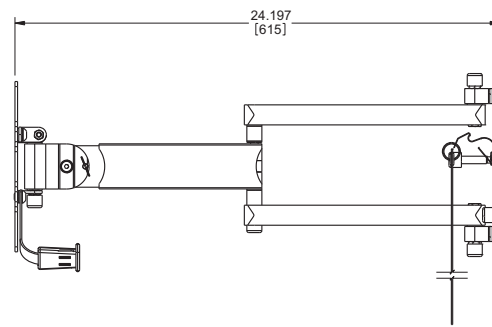
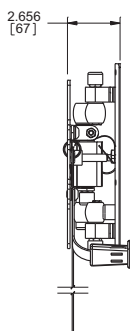
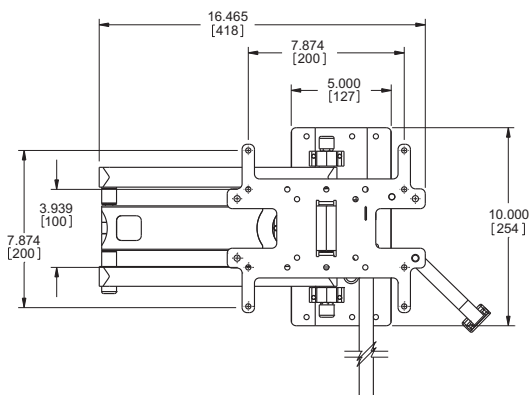
24" double swing with lock

Supports Flat Panels up to 37" or 25 lbs.



Product features:

- Tubular arm design for built-in wire management
- Compression lock system puts your display in compression with the wall, making it ideal in mobile applications
- Aluminum, non-corrosive construction
- Tilt mount and long armature designed to increase viewing angle options
- Double swing arm and pan design provides much versatility for finding that perfect display position
- Variety of fasteners and spacers included to accommodate most flat panel VESA patterns.



Product specifications:

Model: MS24L-FA

**10 Year Warranty - Minimal Assembly Required
Designed, Engineered, and Manufactured in USA**

	ENGLISH	(METRIC)
SUPPORTED SCREEN SIZE:	23"-37"	(58.4cm - 94.0cm)
MAX LOAD:	25 lbs	(11.3 kg)
HOLE PATTERN RANGE: (VESA)	3 X 3", 4 X 4", 4 X 7-7/8", 7-7/8 X 7-7/8"	(75 X 75mm, 100 X 100mm 100 X 200mm, 200 X 200mm)
DIMENSIONS:	16-7/16" W X 10" H X 2-5/8" D	(41.7 W X 25.4 H X 6.67 D cm)
SHIPPING WEIGHT:	7.1lbs	(3.2kg)

